



Hard Surface Busing Information

Hard surface busing information is now available. Please check your Portal account for updated information listed below your daily bus schedule. Only routes that contain gravel roads will have hard surface busing information. Communication will be released from the District on days that the weather requires us to utilize these routes. Please contact the Transportation Department with any questions that you might have at 319-848-5204.

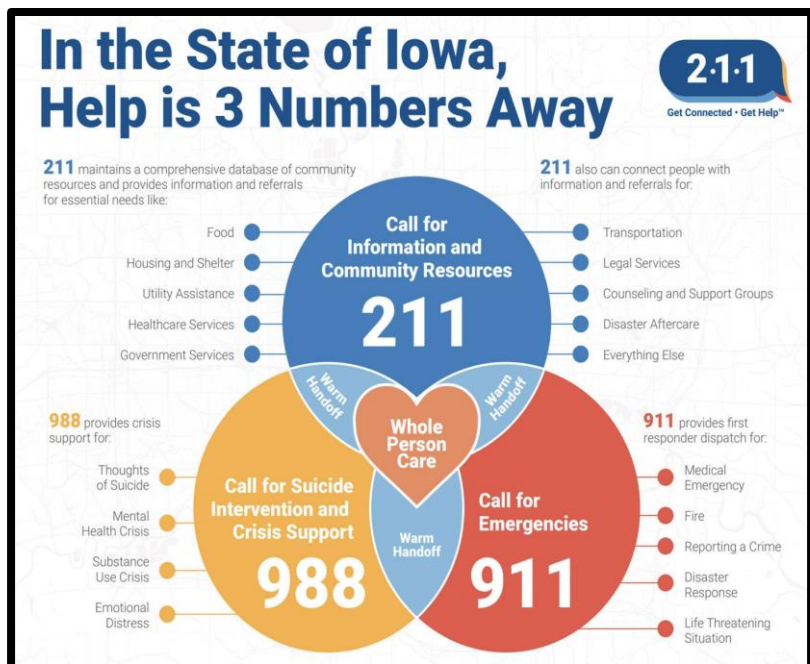
Return to Learn

School districts in Iowa must continue to maintain a “Return to Learn” plan that is available for public input and approved by their local school board. The most recent draft of College Community School District’s “Return to Learn” plan is available [at this link](#). If you have feedback regarding the plan, please contact Laura Medberry, Executive Director of Learning Supports, at 319.848.5217 or via email at lmedberry@crprairie.org. The board will review the Return to Learn plan during their regular meeting on January 23, 2023.

Seasonal Stress

This time of year can bring about fluctuations in mental wellness. Help is just a phone call away. Students and their family members can call 988 for suicide intervention and crisis support 24-7. See the graphic to the right for the differences between 988, 211, and 911 numbers.

If you have questions about resources that may be available for mental health care for your child, please reach out to your child’s school counselor, facilitator, administrator, or nurse. Their contact information is [linked here](#).



You may also contact Kerry Kilker, Community Engagement Specialist, at 319.848.5340 (ext 2110) or kkilker@crprairie.org.

College Community Selected as National ‘Lighthouse’ School System

The College Community School District is one of only eight school districts across the country recognized as a 2022 Fall “Lighthouse System”. College Community was recognized in the area of: Redesign for Early Learning and received special recognition for Strength in Early Learning Partnerships in Service for Highly Diverse Community. [Click here](#) to read more.

Food & Nutrition Dept.

Account Balances: Please check your family meal account balances. If the account balance has reached a level of \$10 or less per person on the account, an automated email notification will be sent to notify your household. If the account balance falls below \$0, an automated email notification will be sent daily. The automated email notifications are sent to the email address of the primary contact listed in Infinite Campus. If you are not receiving the notifications, please check your junk/spam folder. Building Clerks are also sending email reminders and reaching out by phone. If you need your Total Access Parent Portal login information to view account transactions or to set limits, please contact Ginny or Amy by phone at 319-848-5337 or email vscott@crprairie.org. Payments can be made in any of our building offices as well as online via the [In Touch Payment Portal](#).

A note from Total Access/Total K12 on an issue we are experiencing with Yahoo:

Yahoo will arbitrarily delay email delivery when we send low balance notices. When that happens, we retry them hourly until 11:00 AM the next morning before they time out but in most cases they are still not accepted by then. We’ve sent multiple support tickets and received generic replies for help with the issue. We suspect that it’s the volume we are sending that’s triggering them to delay since we’ve ruled out any technical reasons, and on average we send out about 2000 low balance Emails to Yahoo accounts daily. Yahoo will not confirm or discuss what the issue could be, or how it might be mitigated and we do use several processes that allow them to positively verify that all low balance Emails are being sent from TotalK12 and no one else. Each day that they are delayed, we open a new support ticket and are documenting all tickets. Hopefully, our support requests are resulting in some type of adjustments on their side that will eventually result in them accepting notifications reliably. Legally we don’t have any recourse or leverage since the business relationship is between Yahoo and their users and not those who might send them emails. **All Email to providers other than Yahoo/AOL are being accepted and delivered immediately.**

Local Produce: CCSD Food & Nutrition Program was awarded a grant to utilize local produce and meat/ meat alternates. We recently served locally grown apples from Buffalo Ridge in Central City, for lunch. We are looking forward to adding more local items to future menus.

Survey: During the 2020-21 and 2021-22 school years, ALL children received free breakfast and lunch nationwide. Universal free meals ended with the start of the 2022-23 school year. This change has not only impacted families and students but also school nutrition meal account balances. The CCSD negative balances are currently \$13,515.00. At the beginning of the school year, all balances were positive. This survey is being used to gather information to share with legislators on the value of reinstating universal free meals. Please take a few moments to complete the survey linked [here](#). This survey can be completed by parents/ guardians, students, staff, members of the community, etc.

Free and reduced price meal application: If you feel that you may qualify for free or reduced price meals, free and reduced price meal applications can be completed at any time during the school year. If you have already applied but have had a reduction in income or change in household size, you may re-apply at any time during the school year. Our online free and reduced meal application may be completed by visiting: <https://onlineapp.totalk12.com/MuZWtwXsSr2SvuJ9ZfSY>

Resources for food pantries and meal sites: <https://www.crprairie.org/parents-students/ccsd-family-resources-homepage/food-assistance/>

We greatly appreciate your household's participation in our National School Breakfast and Lunch Program. Thank you!

[Iowa and USDA Nondiscrimination Statements](#)