



# College Community School District

*Success for All*  
*To Ensure Quality Learning Today for Tomorrow*

# ***School Funding 101***



***Success for All***  
To Ensure Quality Learning Today for Tomorrow

# General Fund

General Fund Budget is driven by two primary factors:

1. Supplemental State Aid (Allowable Growth)

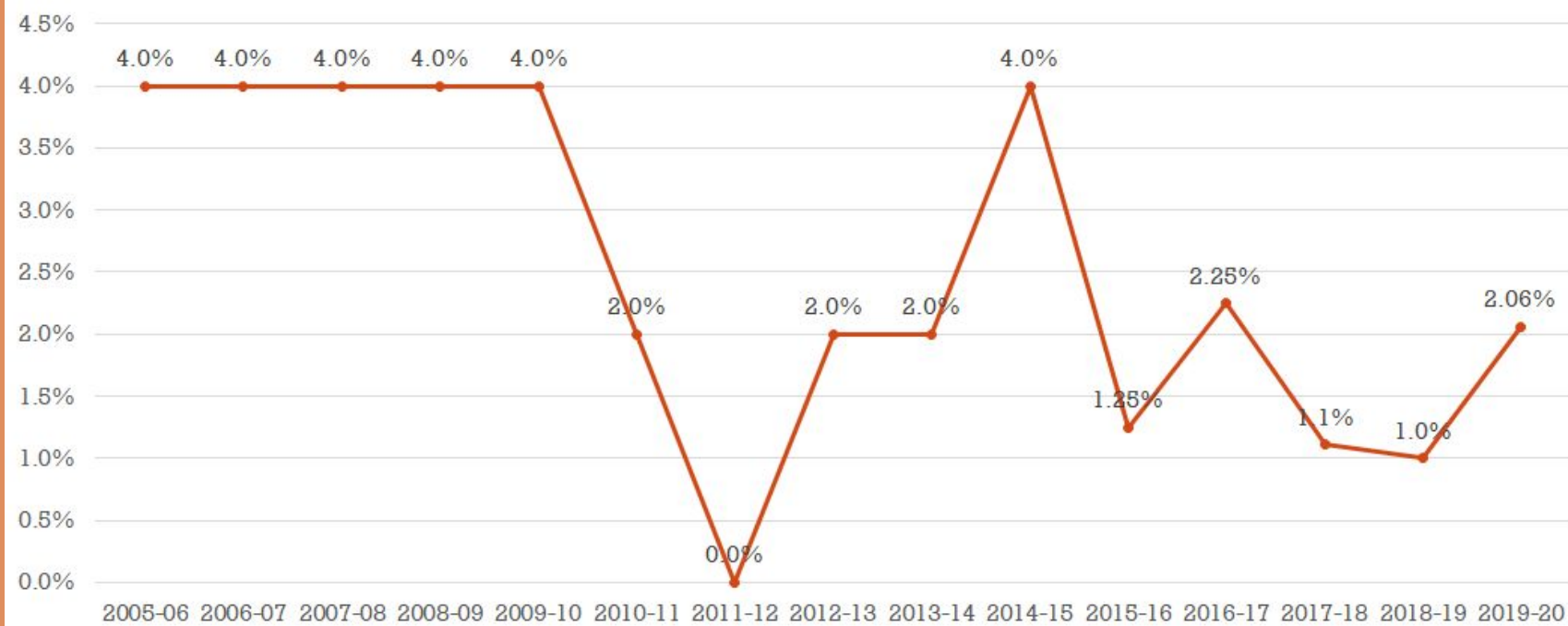
- Set by State Legislature

2. Certified Enrollment

- Count taken in October each year.
  - Count taken in October 2019 is used for FY 2021 budget



# Supplemental State Aid

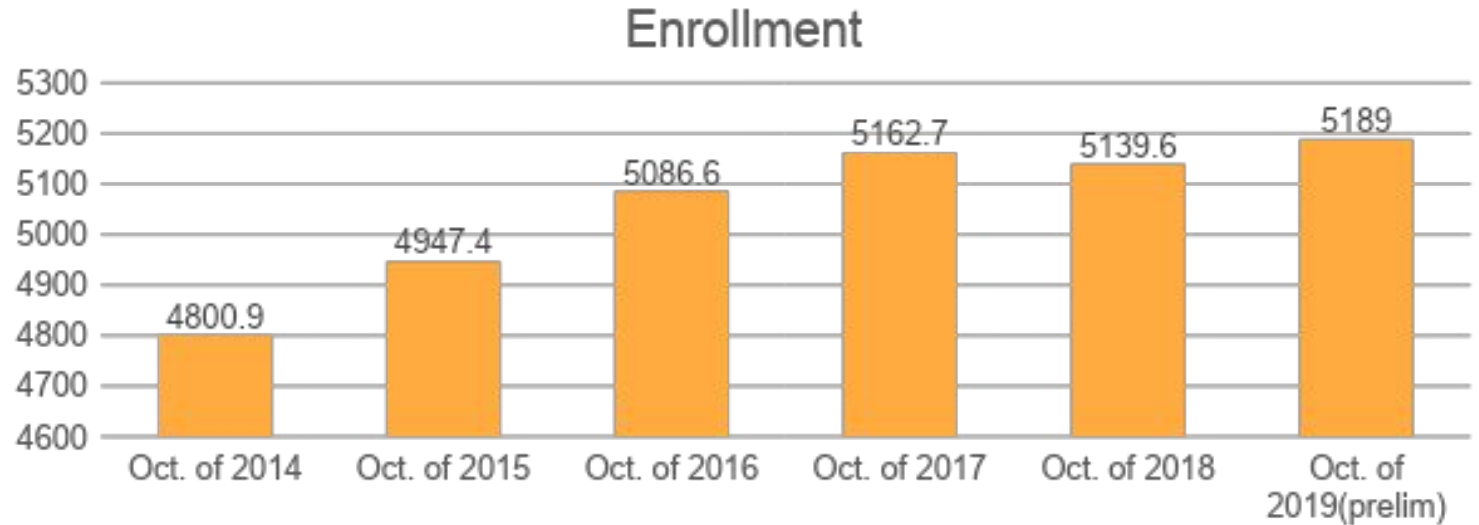


# ***District Cost Per Pupil***

<u><b>Year</b></u>	<u><b>DCPP</b></u>
FY15	\$6,366
FY16	\$6,446
FY17	\$6,591
FY18	\$6,664
FY19	\$6,736
FY20	\$6,880



# *Certified Enrollment*



# ***Components of General Fund Maximum Spending Authority***

1. Combined District Cost
2. Instructional Support Program
3. Miscellaneous Income
4. Other SBRC Approved Authority



# What is Combined District Cost?



Teacher Quality, Teacher Leader, Early Intervention, and Professional Development

Dropout Prevention/At Risk

AEA Flowthrough

Supplemental Weighting

Sharing incentives, ELL, or other items times cost per student

Special Education

Weighting of SPED students times cost per student

Regular Program Cost

Number of students times cost per student.





# *Instructional Support Program*

- Voter or Board approved levy that in theory allows a District to increase its regular program district cost by 10%
- Supposed to be funded by a combination of property taxes and state aid (25%), but the State has since eliminated this appropriation
- The District cannot make up this shortfall locally, neither with funds or authority
- As a result, the ISL funding is closer to 7% of the regular program district cost



# *Miscellaneous Income Examples*

- Open Enrollment Revenue
- Federal Grants (Title, Perkins, Part B, Etc.)
- State Grants (Transportation funding, Early Literacy, Etc.)
- Student Fees
- Medicaid Reimbursements
- Local Grants or Donations
- Interest



# *Other SBRC Approved Authority*

- Increasing Enrollment
- LEP Instruction beyond 5 years
- Special Education Deficit
- ELL Deficit
- Administrative Costs for Four Oaks



# *Summary*

***Maximum spending authority***

=

Prior unspent authority

+

Combined District Cost

+

Instructional Support

+

Miscellaneous Income

+

SBRC Authority



# Questions?



*Success for All*  
To Ensure Quality Learning Today for Tomorrow